



Farabaugh Engineering and Testing Inc.

Project No. T116-13 B

Report Date: February 4, 2013

No. Pages: 10 (inclusive)

PERFORMANCE TEST REPORT

ASTM B117-11

SALT SPRAY (FOG) Exposure

ON

Three (3) Various Snow Guards

(Snow Guard RT, Snow Guard LT, Snow Guard SM)

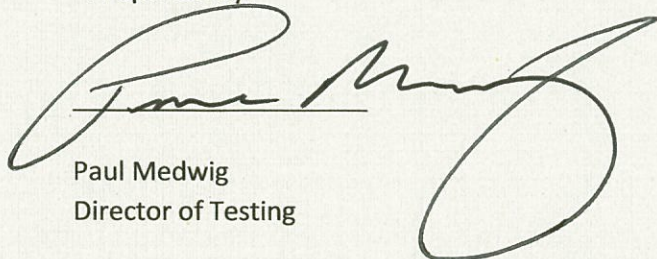
FOR

Lifetime Tool and Building Products

250 AIRPORT ROAD

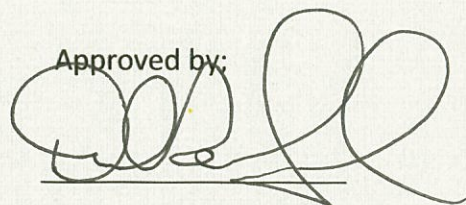
WINCHESTER, VA 22602

Prepared by:



Paul Medwig
Director of Testing

Approved by:



Daniel G. Farabaugh
President



ACCREDITED
LABORATORY
TL-186



ACCREDITED
LABORATORY



ACCREDITED
LABORATORY



TEXAS DEPARTMENT
OF INSURANCE
ACCREDITED LABORATORY

PERFORMANCE TEST REPORT

Manufacturer: Lifetime Tool and Building Products
250 AIRPORT ROAD
WINCHESTER, VA 22602

General

On December 21, 2012, Farabaugh Engineering and Testing Inc. (FET) received Three (3) various styles of snow guards, identified below; from Lifetime Tool and Building Products for the purpose of Salt Spray (Fog) Exposure.

Test specimen Identification:

- Snow Guard RT
- Snow Guard LT
- Snow Guard SM

* Information provided by Client

Test Procedure

Testing was performed In General Accordance with ASTM B117-11 "Standard Practice for Operating Salt Spray (Fog) Apparatus". (1000 Hours Exposure)

TEST RESULTS

See attached Results:

Test Results

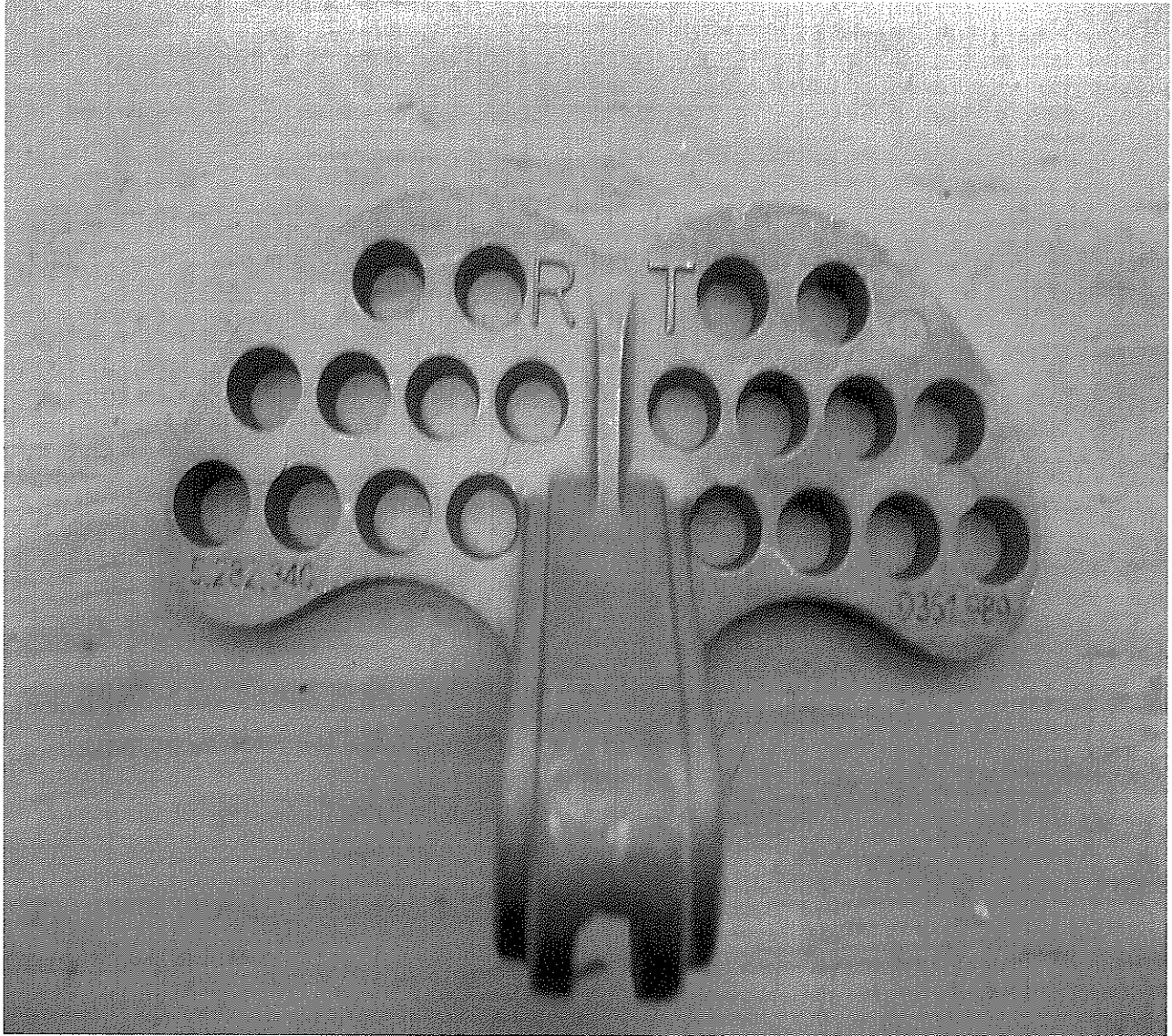
Hours	Observations	Observations	Observations
0 hrs	Snow Guard RT	Snow Guard LT	Snow Guard SM
24 hrs	NC	NC	Less than 1%
36 hrs	NC	NC	Less than 1%
48 hrs	NC	NC	Less than 1%
72 hrs	NC	NC	Less than 1%
96 hrs	1% RR	NC	Less than 1%
120 hrs	1% RR	NC	10% RR, 10% WC
144 hrs	1% RR, 10% WC	NC	10% RR, 50% WC
168 hrs	1% RR, 10% WC	NC	10% RR, 50% WC
192 hrs	1% RR, 10% WC	NC	10% RR, 50% WC
216 hrs	1% RR, 10% WC	NC	10% RR, 50% WC
240 hrs	1% RR, 10% WC	NC	10% RR, 50% WC
264 hrs	1% RR, 10% WC	NC	10% RR, 50% WC
288 hrs	1% RR, 10% WC	NC	10% RR, 50% WC
312 hrs	1% RR, 10% WC	NC	10% RR, 50% WC
336 hrs	1% RR, 10% WC	NC	15% RR, 70% WC
360 hrs	1% RR, 10% WC	NC	15% RR, 70% WC
384 hrs	1% RR, 10% WC	NC	15% RR, 70% WC
408 hrs	1% RR, 10% WC	NC	15% RR, 70% WC
432 hrs	1% RR, 20% WC	NC	15% RR, 70% WC
456 hrs	1% RR, 20% WC	NC	15% RR, 70% WC
480 hrs	1% RR, 20% WC	NC	15% RR, 70% WC
500 hrs	1% RR, 20% WC	NC	15% RR, 70% WC
528 hrs	1% RR, 20% WC	NC	15% RR, 70% WC
552 hrs	1% RR, 20% WC	NC	15% RR, 70% WC
576 hrs	1% RR, 20% WC	NC	15% RR, 70% WC
600 hrs	1% RR, 30% WC	Less than 1% RR	20% RR, 80% WC
624 hrs	1% RR, 30% WC	Less than 1% RR	20% RR, 80% WC
648 hrs	1% RR, 30% WC	Less than 1% RR	20% RR, 80% WC
672 hrs	1% RR, 30% WC	Less than 1% RR	20% RR, 80% WC
696 hrs	1% RR, 30% WC	Less than 1% RR	20% RR, 80% WC
720 hrs	1% RR, 30% WC	Less than 1% RR	20% RR, 80% WC
744 hrs	1% RR, 30% WC	Less than 1% RR	20% RR, 80% WC

Code: NC – No Corrosion, WC – White Corrosion, RR – Red Rust, BR – Black Rust, PB- Paint Blister

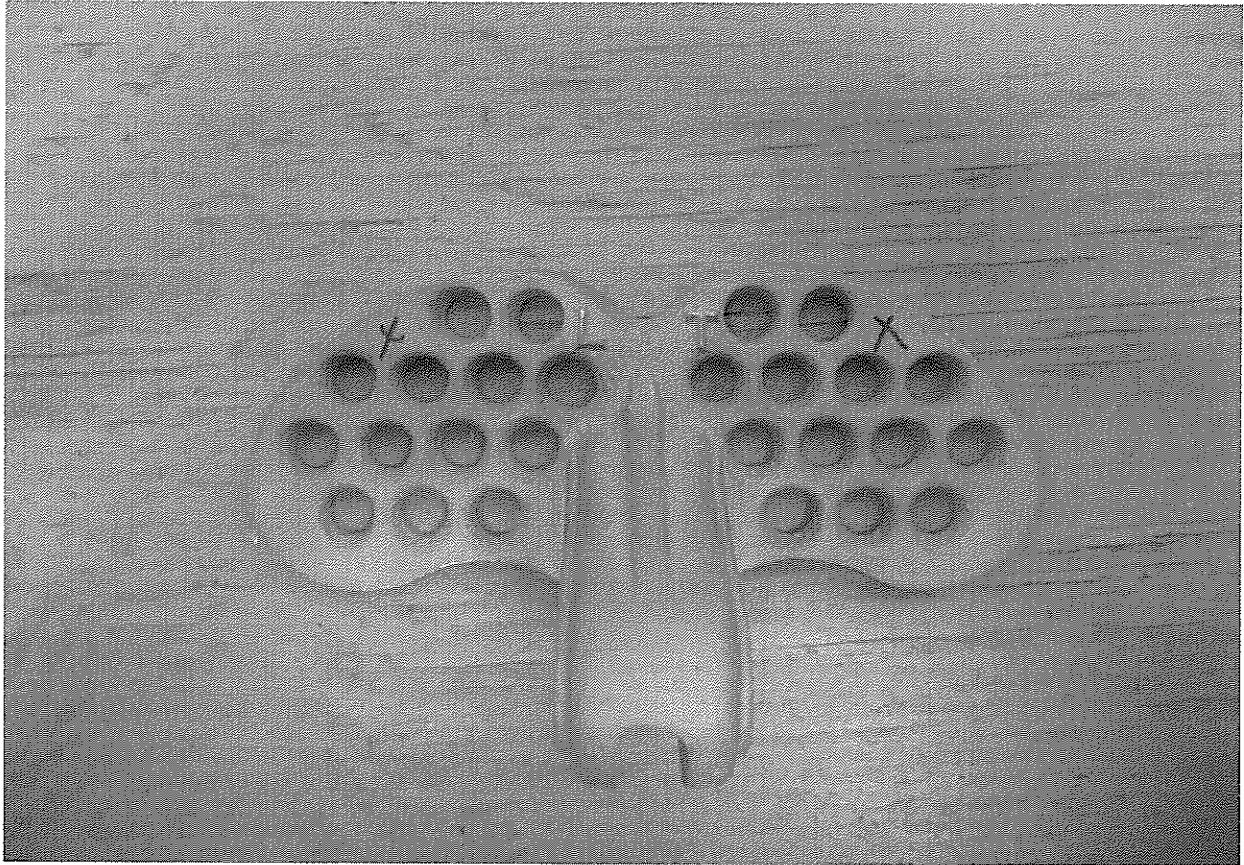
Test Results

Hours	Observations	Observations	Observations
Cont:	Snow Guard RT	Snow Guard LT	Snow Guard SM
768 hrs	1% RR, 30% WC	Less than 1% RR	20% RR, 80% WC
792 hrs	1% RR, 30% WC	Less than 1% RR	20% RR, 80% WC
816 hrs	1% RR, 30% WC	Less than 1% RR	20% RR, 80% WC
840 hrs	1% RR, 30% WC	Less than 1% RR	20% RR, 80% WC
864 hrs	1% RR, 30% WC	Less than 1% RR	20% RR, 80% WC
888 hrs	5% RR, 60% WC	Less than 1% RR	20% RR, 80% WC
912 hrs	5% RR, 60% WC	Less than 1% RR	20% RR, 80% WC
936 hrs	5% RR, 60% WC	Less than 1% RR	20% RR, 80% WC
960 hrs	5% RR, 60% WC	Less than 1% RR	20% RR, 80% WC
984 hrs	5% RR, 60% WC	Less than 1% RR	20% RR, 80% WC
1000 hrs	5% RR, 60% WC	Less than 1% RR	20% RR, 95% WC

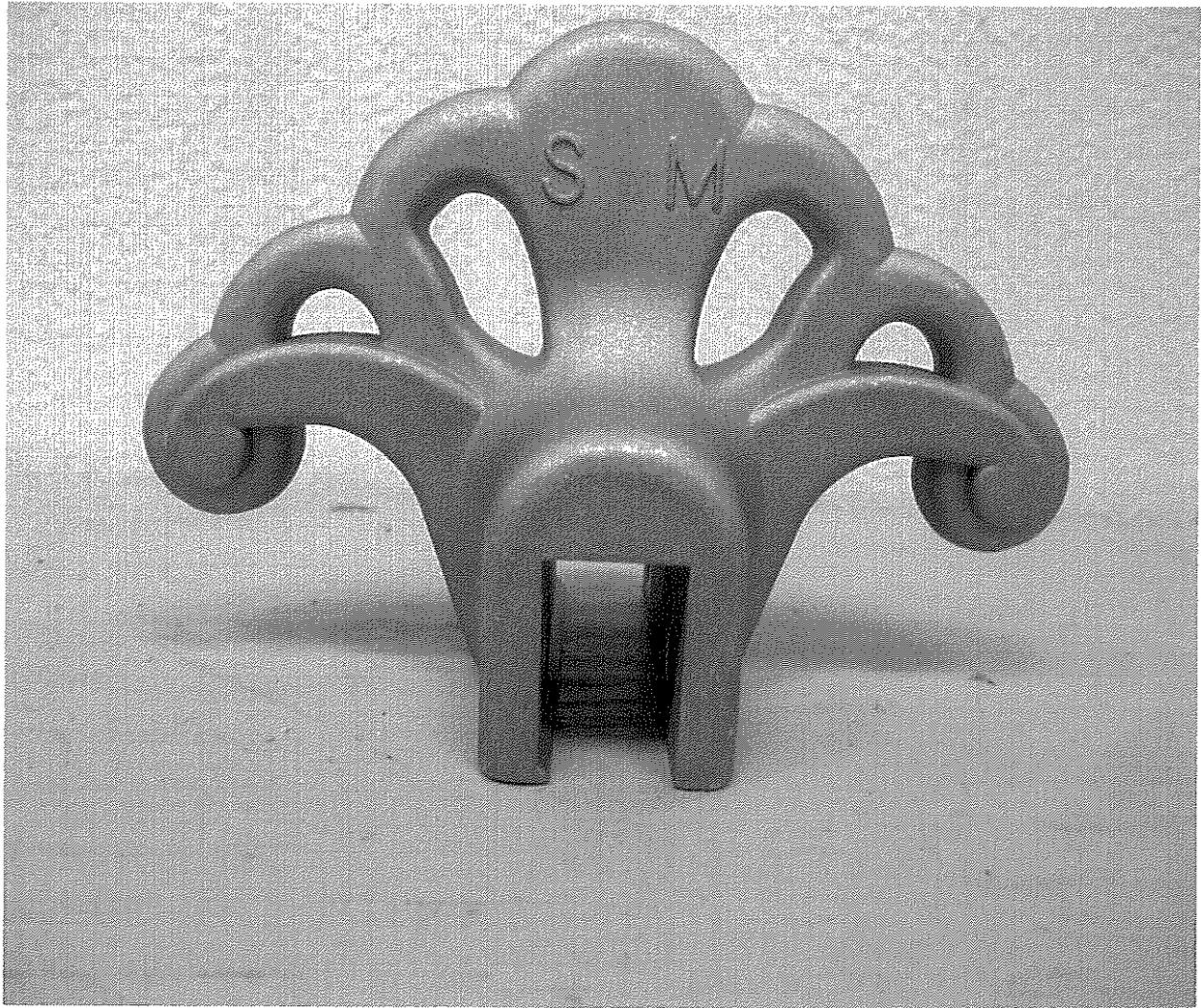
Code: NC – No Corrosion, WC – White Corrosion, RR – Red Rust, BR – Black Rust, PB- Paint Blister



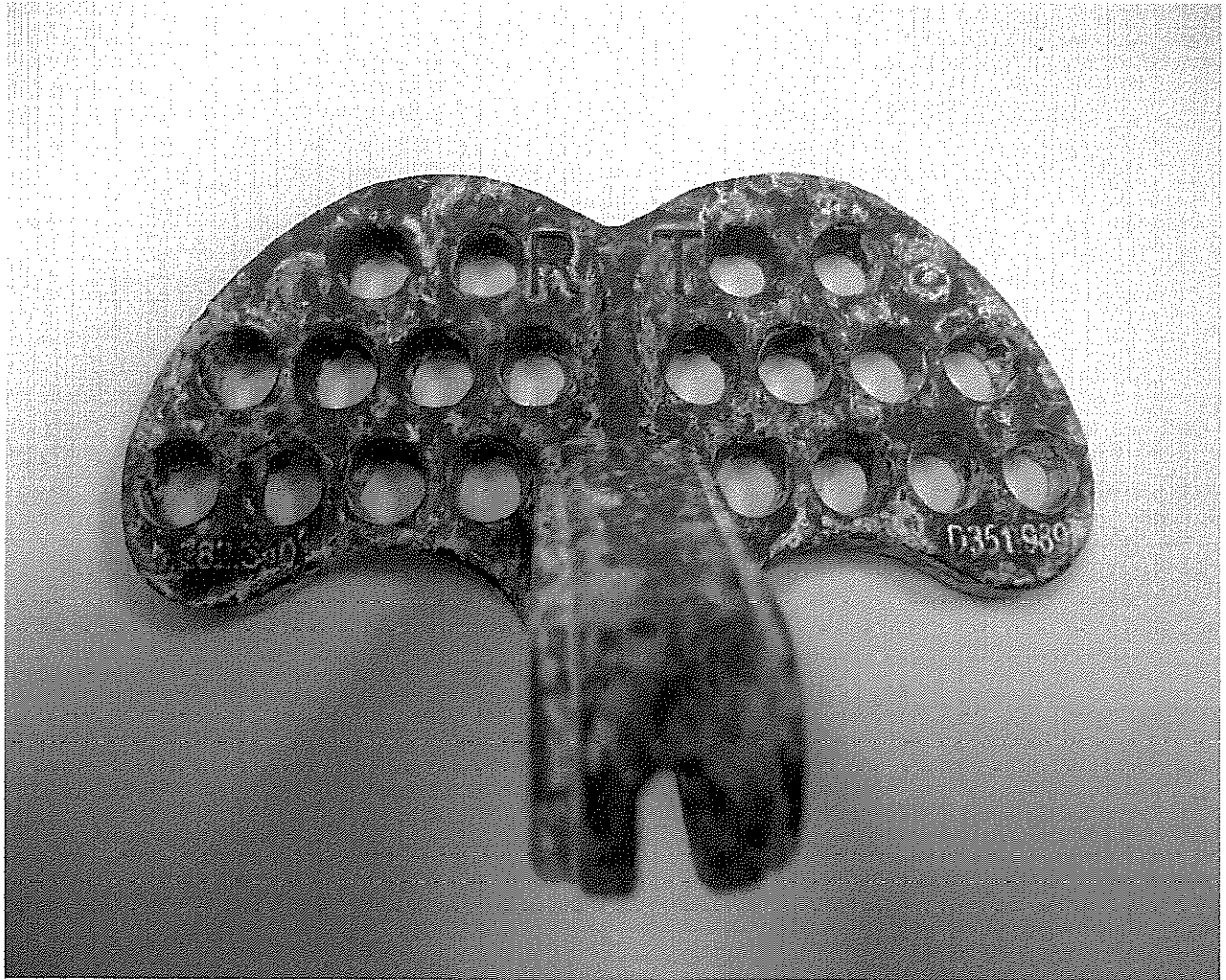
0 HOURS EXPOSURE
Snow Guard RT



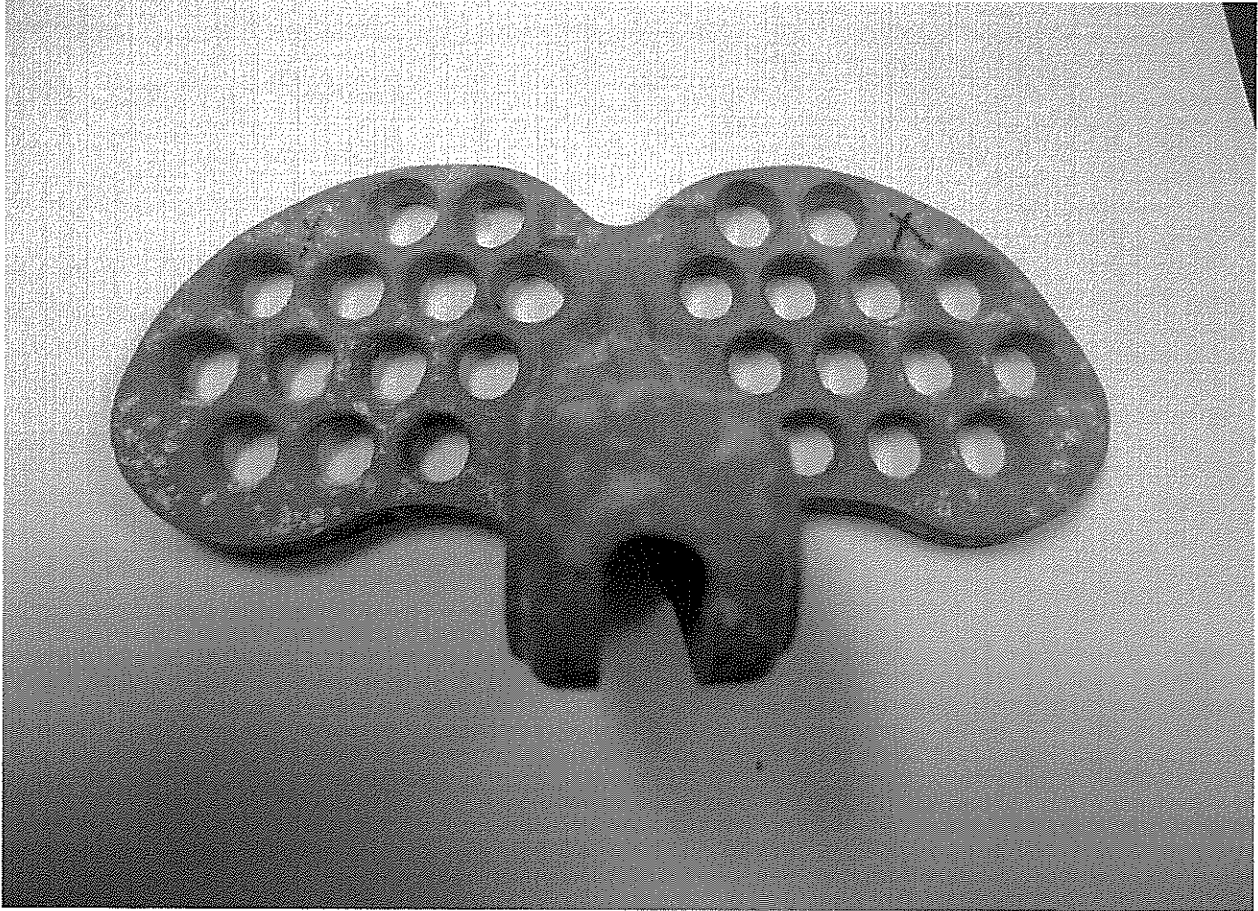
0 HOURS EXPOSURE
Snow Guard LT



0 HOURS EXPOSURE
Snow Guard SM



1000 HOURS EXPOSURE
Snow Guard RT



1000 HOURS EXPOSURE
Snow Guard LT



1000 HOURS EXPOSURE
Snow Guard SM