

LT-AP Snow Guard

Product Description

The LT-AP Snow Guard by Lifetime Tool® is sized to accommodate standing seam or snap-lock interlocking panel seams up to ½" total seam thickness. The LT-AP is a unitary snow retention device used to prevent the risk of snow slides from sloped metal roof structures, it has been developed, manufactured, and tested to rigorous standards in the USA for superior snow load performance.

Manufactured from a certified aluminum-magnesium alloy, Almag 35, utilizing a proprietary casting process specific to the Almag 35 alloy, the LT-AP exhibits strength to withstand maximum screw torque without failure or breakage. Cast as a pure, non-filled alloy, there is zero ferrous content so corrosion will never become an issue for any service life encountered.

Adapted for taller and thicker seams, the LT-AP provides two stainless steel set screws per each of the two seam attachment locations, allowing the installer flexibility in mounting to the various seam geometries supplied for sloped metal roofing. The set screws are further specified such that for each mounting location, one set screw has a concave tip, while the other has a convex tip, allowing the seam metal to be formed between these tips without cutting when torque is applied for a permanent attachment to the seam.

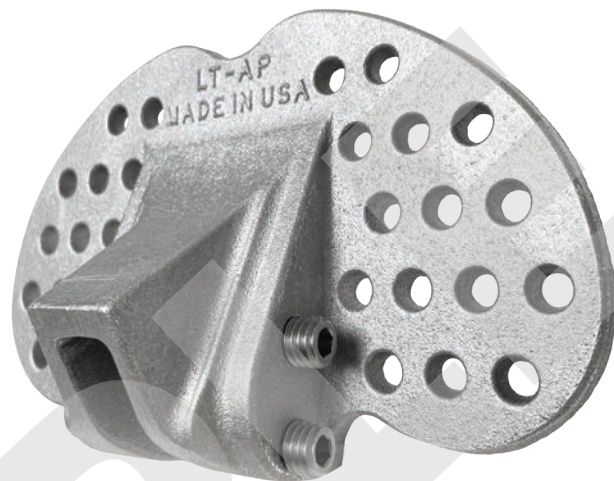
Instructions & Recommendations For Use

Position the snow guard over the seam at the correct structural location on the roof and tighten the set screws as required for the seam geometry being used. All set screws require a 3/16" hex drive tool or bit. Torque sufficiently to form the seam between the set screw tips.

Two size options are offered for the LT-AP Snow Guard. The LT-AP-400 will fit over seam thicknesses up to 25/64" (0.390") which will typically be found on 26 ga. metal snap-lock panels. The LT-AP-500 will fit over seam thicknesses up to 1/2" (0.500") which is typically found on 24 ga. and 22 ga. metal snap-lock panels.

Additional information can be found on the Lifetime Tool® website at www.lifetimetool.com

**LIFETIME TOOL®
& BUILDING
PRODUCTS LLC**



Benefits of Using the AP Snow Guard

The precision manufactured LT-AP Snow Guard utilizes materials known for long-term outdoor exposure, and provides other benefits, including:

- Cast from a certified Almag 35 alloy with zero filler additives for excellent corrosion resistance
- Precision casting process provides high strength to weigh ratio, where finished parts will not break when torque is applied
- Exterior surfaces provide an excellent substrate for plating, primer, paint, or coating
- Two seam clamp locations with opposing set screw seam grip for flexibility at installation
- Set screws provided are manufactured from high quality 303 Stainless Steel with a passivated finish
- Easy to install quickly on most any seam geometry
- Unmatched strength and durability against any unitary snow guard manufactured and sold today

All components are made, assembled, and packaged in the U.S.A. Warrantied for the life of the roof covering materials that it is installed with. A truly sustainable roof component built to last and perform on the roof.

Specific Data

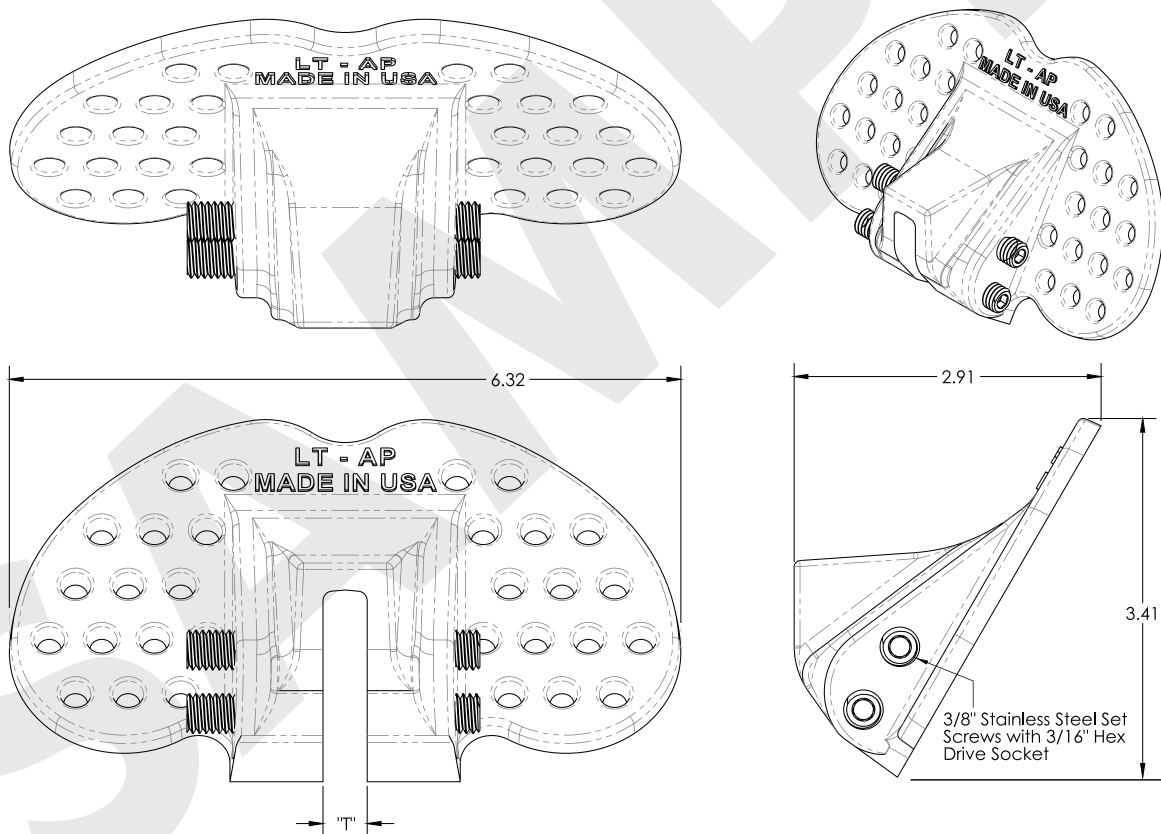
Materials of Construction:

- **Snow Guard Body** – Precision cast from a high-strength Aluminum-Magnesium Alloy, called Almag 35, used in industry for electronic equipment and aerospace applications requiring excellent dimensional stability and strength. It exhibits superior ductility and does not require tempering to achieve maximum strength capability.
- **Clamp Set Screws** – Swiss screw machined from a high-quality type 303 stainless steel and then passivated for superior oxidation resistance.

Availability:

The LT-AP is available in two sizes, the LT-AP-400 and the LT-AP-500 as illustrated in the specification drawing and size table shown below. Both sizes are available in a mill finish only. No primed, painted, or coated finishes are available at this time. Recommended surface preparation and painting/coating guidelines are available online at www.lifetimetool.com under the tab "Support".

Packaged in cartons of 50 pieces with instructions and a 3/16" hex driver tool. A hardened high quality 3/16" hex driver bit to fit battery powered driver hand tools is available for purchase separately.



Lifetime Tool AP Dimensions

Maximum Seam Thickness	LT Part No.	Dim "T"	Parts / Carton	Carton Dimensions	Carton Weight
25/64" (0.390)	LT - AP - 400	0.406"	50	12"x12"x10"	37 lbs.
1/2" (0.500)	LT - AP - 500	0.516"	50	12"x12"x10"	36 lbs.

Notice:

All parts are manufactured and assembled in the U.S.A.

Lifetime Tool® is registered by and the property of Lifetime Tool and Building Products, LLC no unauthorized use is permitted.

CAGE Code No. 94YWS